

# Figures

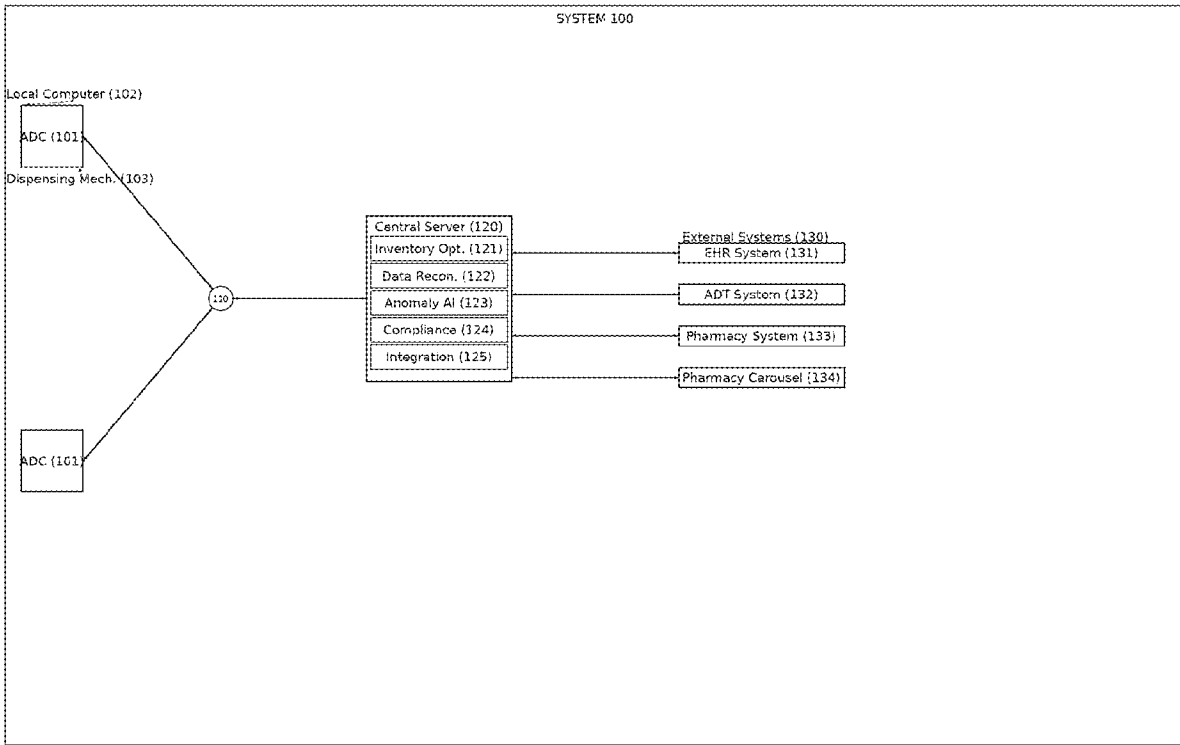


FIG. 1 - System Architecture

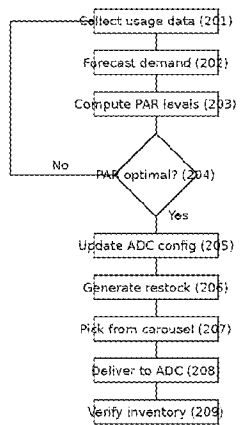


FIG. 2 - Dynamic PAR-Level Adjustment Flowchart

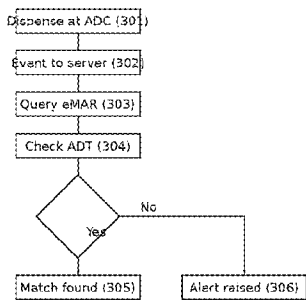


FIG. 3 - Real-Time Trip Matching Sequence

Dashboard 400	Resolution Asst. (440)
Discrepancy entry (410) - Score (401)	Recommended action:
Doc. mismatch entry (420) - Score	- Mark as resolved
Pattern anomaly entry (430) - Score	

FIG. 4 - Anomaly Scoring and Resolution UI

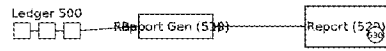


FIG. 5 - Immutable Audit Logging and Compliance Reporting